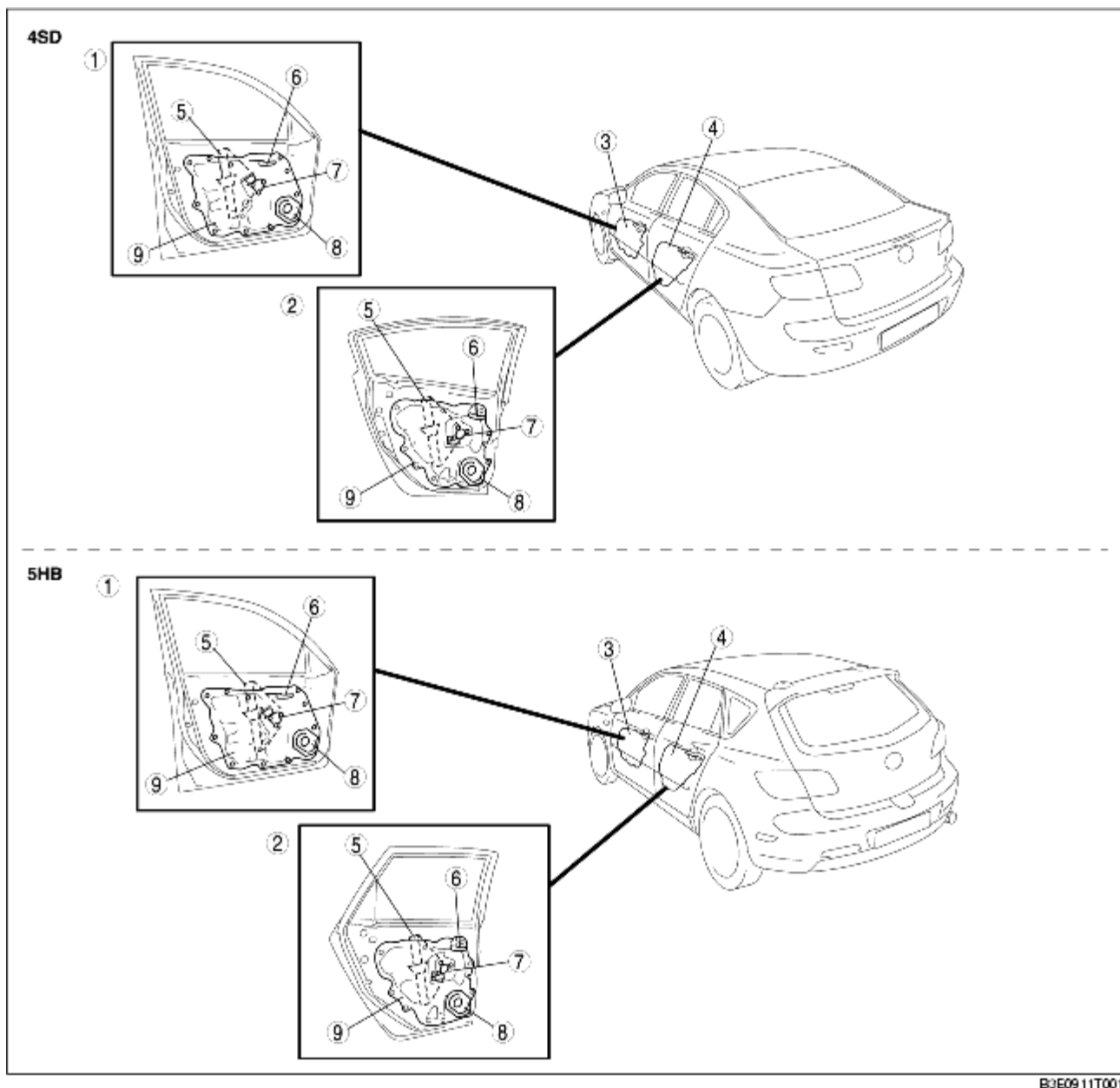


DOOR CONSTRUCTION

B3E091158010T02

- The internal parts of the door (inner handle, power/manual window regulator, power window motor, door speaker, and door harness) have been integrated into a front door module carrier.
- Due to the integrated door module, weight reduction has been achieved for the whole door.
- Waterproofing of the internal door parts is achieved due to the sectional design of the door module carrier.
- Fiberglass reinforced plastic has been adopted for the door unit carrier to improve rigidity.

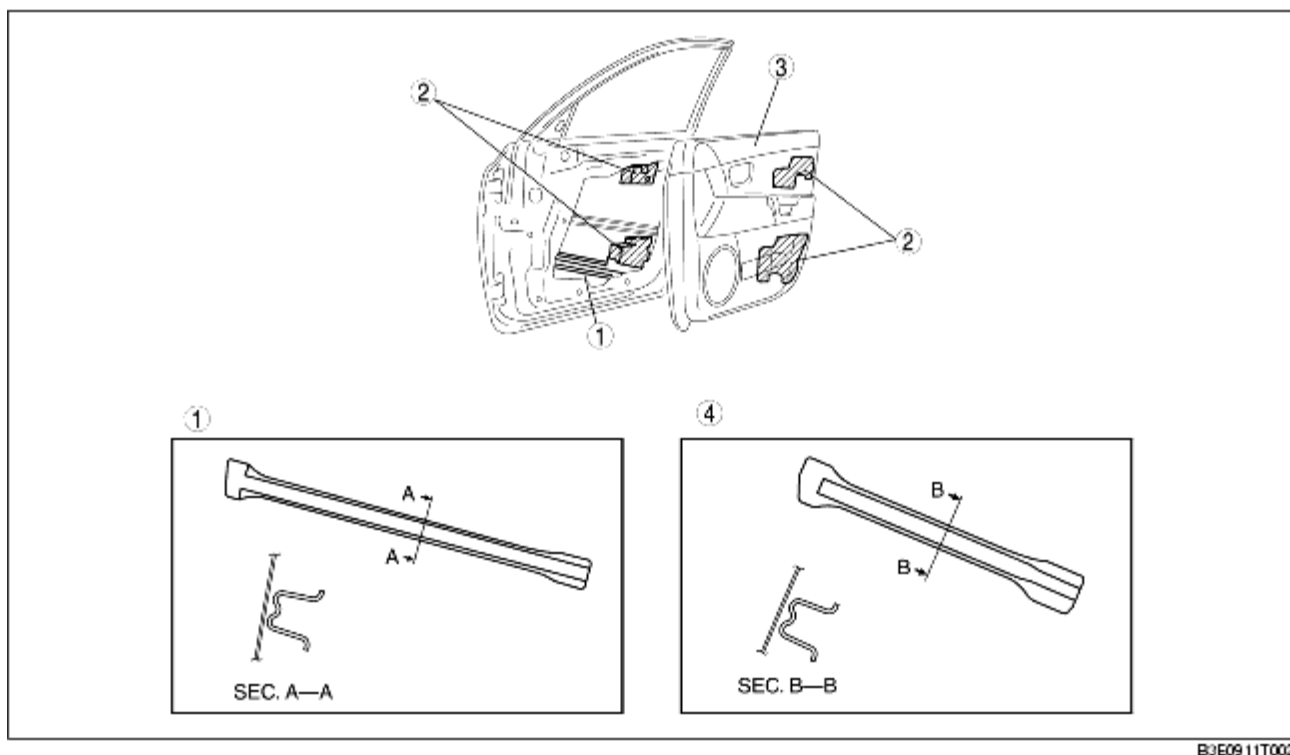


B3E0911T001

1	Front door
---	------------

2	Rear door
3	Front door unit
4	Rear door unit
5	Power/manual window regulator
6	Inner handle
7	Power window motor
8	Door speaker
9	Door unit carrier

- A corrugated side impact bar has been adopted to improve rigidity in case of collision.
- The side impact bar, located on the bottom part of the door, prevents the door from deforming inward by dispersing the impact to the floor in case of a side-impact collision.
- The shock absorbing pad, located inside the door trim and door, functions to soften collision impact.



B3E09 11T002

1	Side impact bar (front door)
2	Shock absorbing pad
3	Door trim
4	Side impact bar (rear door)